

Ministry to Migrants, Refugees, and Itinerant People

The Catholic Worship Site Inventory

The Pastoral Care of Migrants, Refugees, and Travelers (PCMRT)



Ministry to “People On the Move”

- The Code of Canon Law stipulates that “A parish is a certain community of Christ’s faithful stably established within a particular Church” (Can. 515). “As a general rule, a parish is to be territorial, that is to embrace all Christ’s faithful for a given territory” (Can. 518).
- What about those who are within these boundaries, from time to time, but who do not permanently reside there? What about those who newly reside there?

What We Now Know

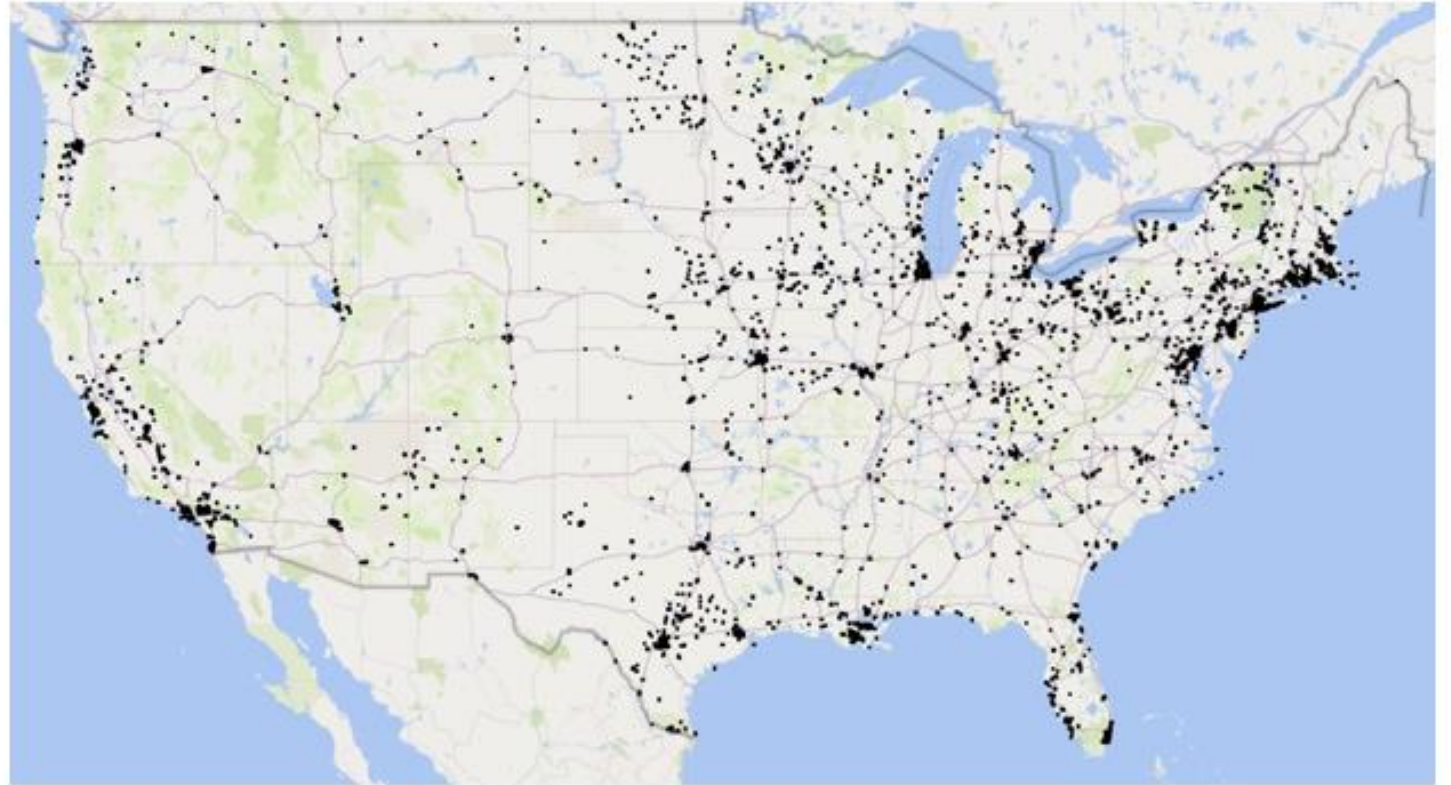
- The Center of Applied Research in the Apostolate (CARA) has been studying migrant, refugee, and traveler communities and the Catholic Church's awareness of these communities since 2017.
- CARA has identified numerous gaps in the presence of communities and the Church's awareness of these.
- These communities, even where the Church is aware are lacking resources and outreach.

How We Know It: Catholic Worship Site Inventory

- CARA has been surveying with a National Parish Inventory since 2000. This was adapted to include other worship sites like missions, shrines, and chapels for a Catholic Worship Site Inventory (CWSI).
- CARA sent this to 19,785 worship sites in the U.S. This was in the field from June 2017 to November 2020.
- Overall 2,391 worship sites responded.
- Over the course of years of data collection reminders, the most common reaction from non-responding pastors was that they were not aware of any of the communities the inventory inquired about in their parish boundaries.

Responding Worship Sites

Responding parishes are slightly over-represented in the South and underrepresented in the Midwest. However, this may be related to the greater presence of migrant and itinerant communities in the South compared to the West.



Geographic Distribution of Worship Sites

	Responding Worships Sites	All Worship Sites
Northeast	32%	34%
Midwest	20	26
South	30	23
West	18	17



Masses in Languages other than English


- Twenty-two percent of responding worship sites indicate that they have at least one Spanish Sunday and Saturday Vigil Masses per week.
- Another 8% have a weekend Mass in a language other than English or Spanish.

Language	Number of Worship Sites	% of Responding Sites
Spanish	517	21.6%
Latin	38	1.6%
Bilingual (Spanish and English)	25	1.0%
Vietnamese	25	1.0%
Polish	15	0.6%
Portuguese	10	0.4%
Korean	7	0.3%
Tagalog	7	0.3%
Arabic	6	0.3%
Ukrainian	5	0.2%

Largest Immigrant Communities Identified by Country and Region

- Sites are most aware of Asian and Pacific communities from the Philippines, Vietnam, and India.
- Sites are most aware of African communities from Nigeria.
- Sites are most aware of American and Caribbean communities from Mexico, El Salvador, Guatemala, and Colombia. Sites are most aware of non-Spanish speaking communities in this region from Haiti and Brazil.
- Sites are most aware of European communities from Poland and Portugal.

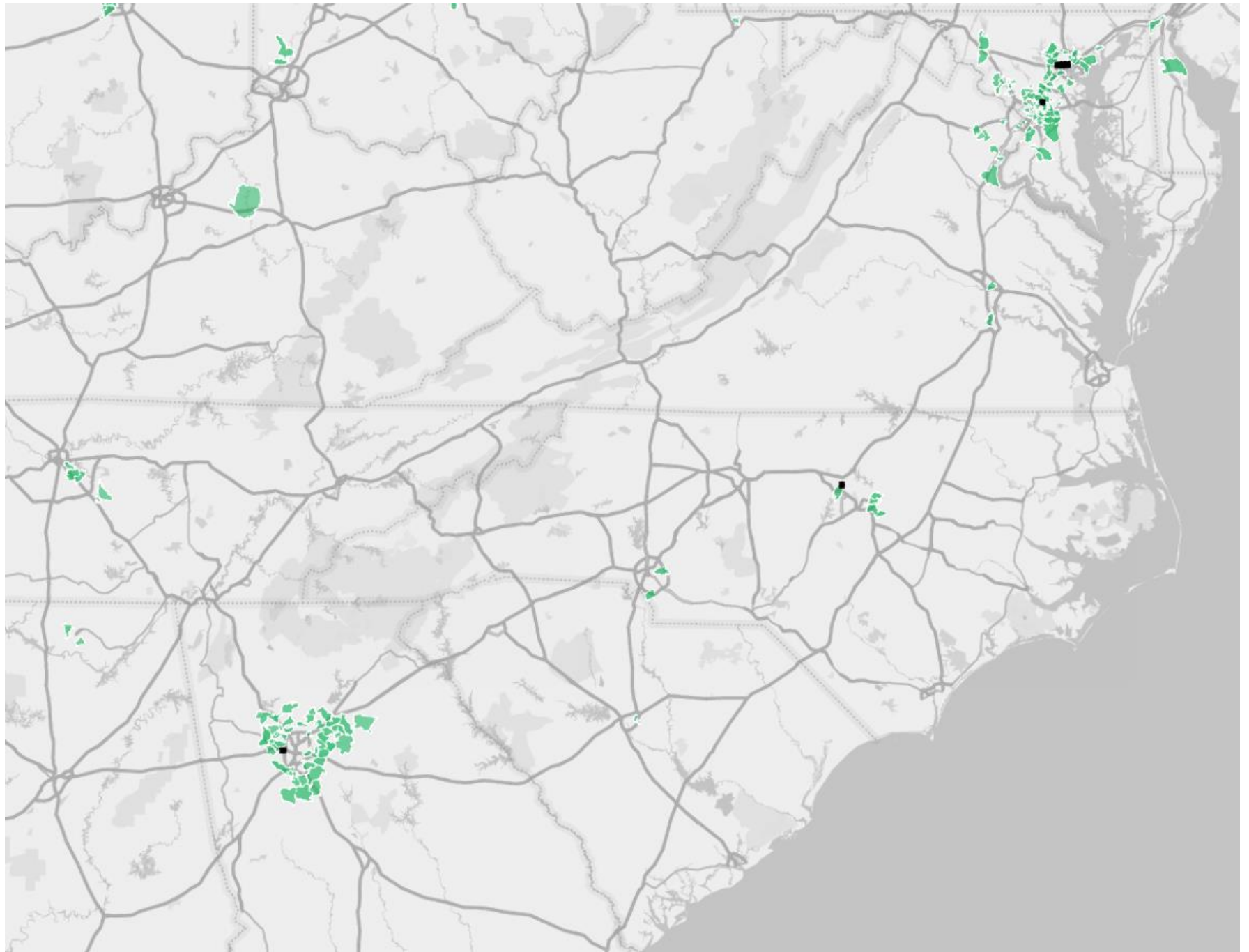
Country/Region	Number of Sites	Size of Foreign-born Population in U.S.
Asia and Pacific		
Philippines	88	1,983,626
Vietnam	40	1,336,944
India	22	2,561,906
<i>Asia (country not specified)</i>	11	13,641,251
<i>Middle East (country not specified)</i>	5	1,127,336
<i>Pacific Islands (country not specified)</i>	3	--
Asia Region Total	222	26,882,046
Oceania Region Totals	7	28,315
Africa		
Nigeria	21	350,272
<i>Africa (country not specified)</i>	23	2,256,664
Africa Region Total	79	3,671,221
Americas and Caribbean, Spanish Speaking		
Mexico	328	11,250,211
El Salvador	44	1,380,979
Guatemala	36	979,095
Colombia	24	761,374
<i>Hispanic/Latino/Latin America/Spanish (country not specified)</i>	73	17,925,330
<i>Central and/or South America (country not specified)</i>	39	17,925,330
<i>Caribbean (country not specified)</i>	7	4,335,512
Americas and Caribbean, Non-Spanish Speaking		
Haiti	10	672,655
Brazil	9	433,470
Americas and Caribbean Region Totals	667	62,591,243
Europe		
Poland	23	410,835
Portugal	19	171,118
<i>European (country not specified)</i>	3	4,763,787
Europe Region Totals	98	7,785,750

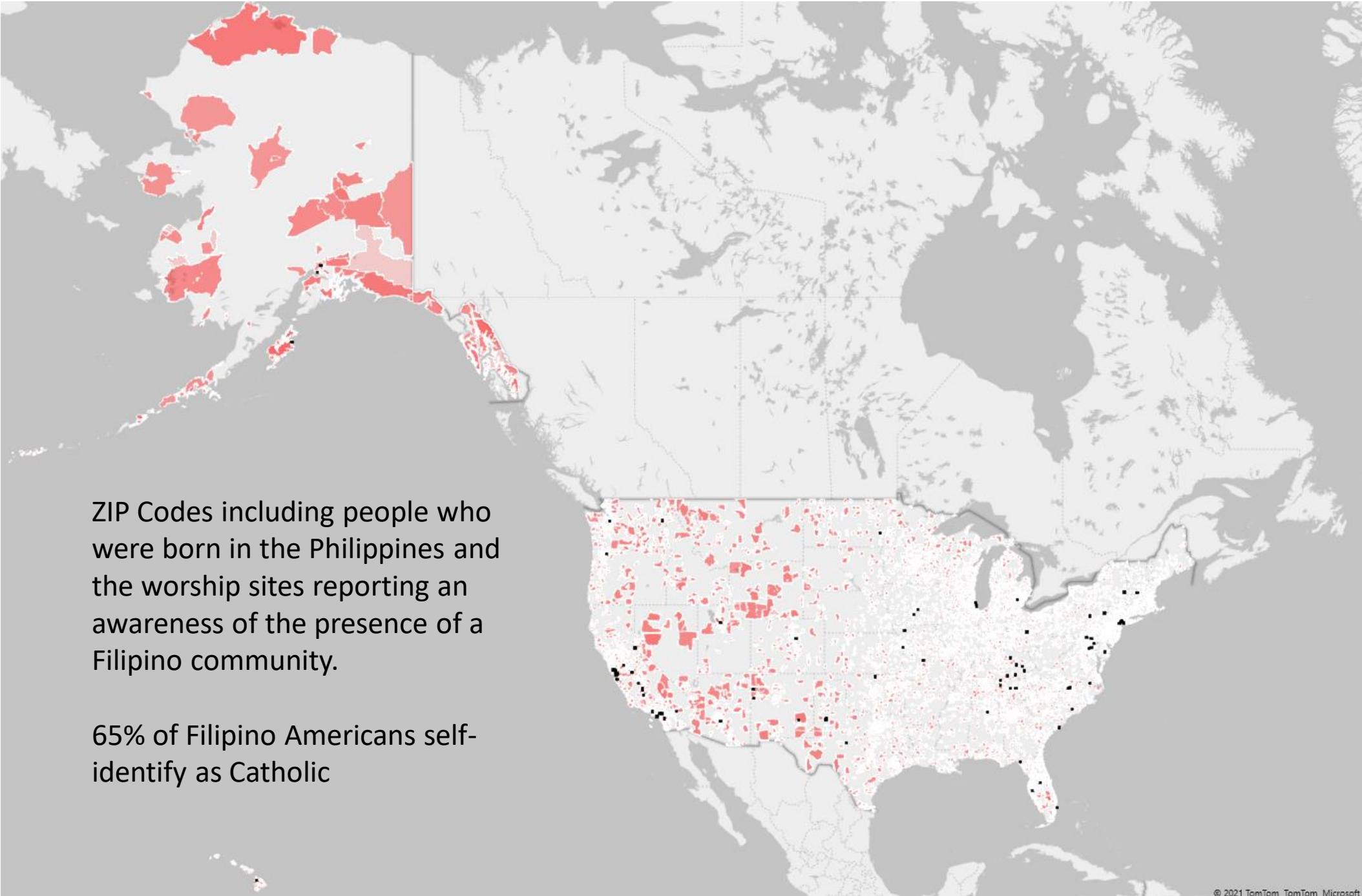
A map of the United States with a grid of ZIP codes. Several ZIP codes are highlighted in green, indicating the presence of a Nigerian community. The highlighted areas are primarily in the West Coast (California, Oregon, Washington), the Southwest (Arizona, New Mexico), and the South (Texas, Louisiana, Mississippi, Alabama, Georgia). There are also some green highlights in the Northeast and Midwest. The map is overlaid on a grayscale topographic background.

ZIP Codes including people who were born in Nigeria and the worship sites reporting an awareness of the presence of a Nigerian community.

Mid-Atlantic & Southeast: Zip Codes with 150 or more residents born in the Nigeria and the worship sites aware of Nigerian communities

Arch/dioceses: Galveston-Houston, Washington, Atlanta, Baltimore, and Dallas have the largest foreign-born Nigerian populations



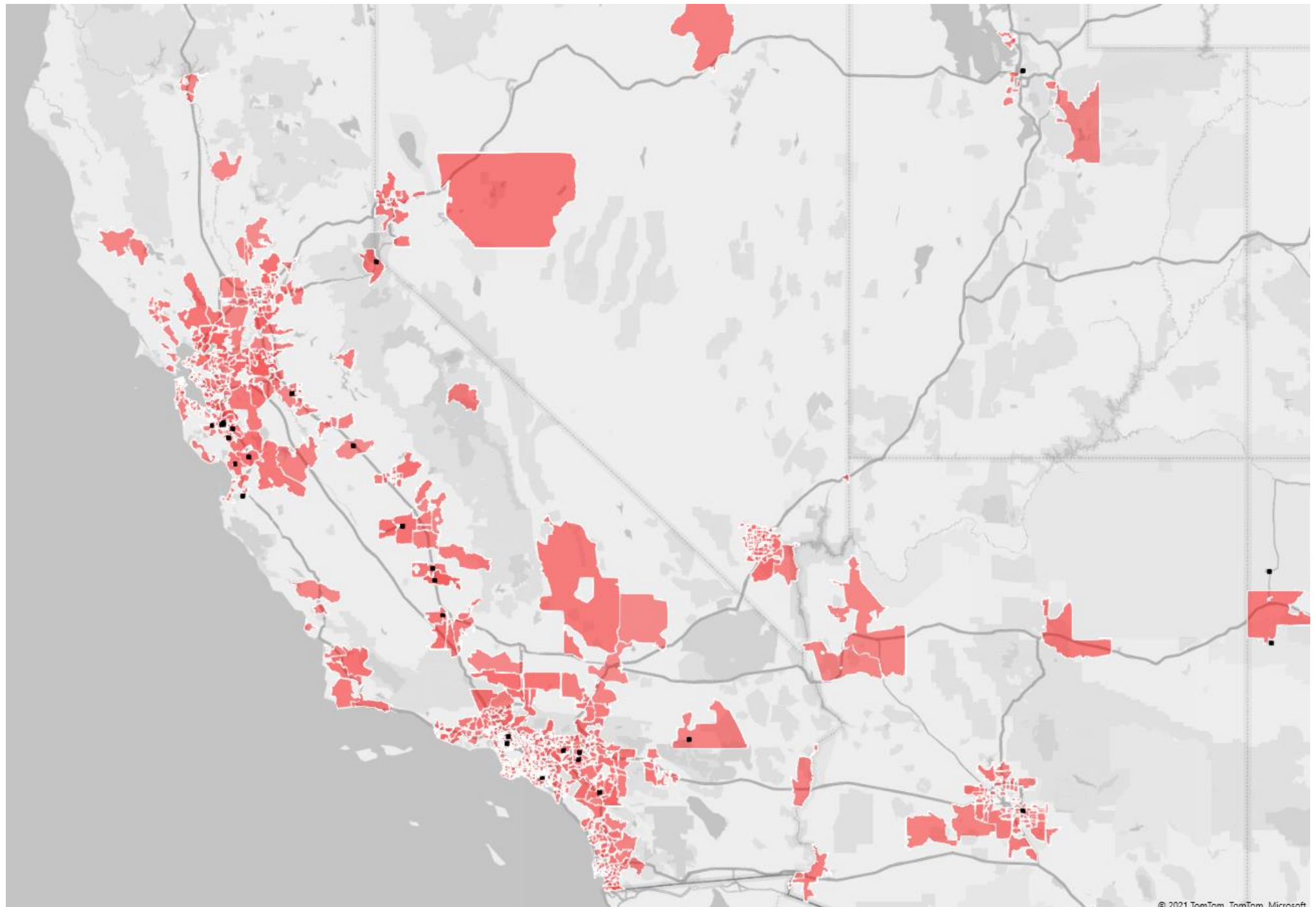


ZIP Codes including people who were born in the Philippines and the worship sites reporting an awareness of the presence of a Filipino community.

65% of Filipino Americans self-identify as Catholic

Southwest: Zip Codes with 150 or more residents born in the Philippines and the worship sites aware of Filipino communities

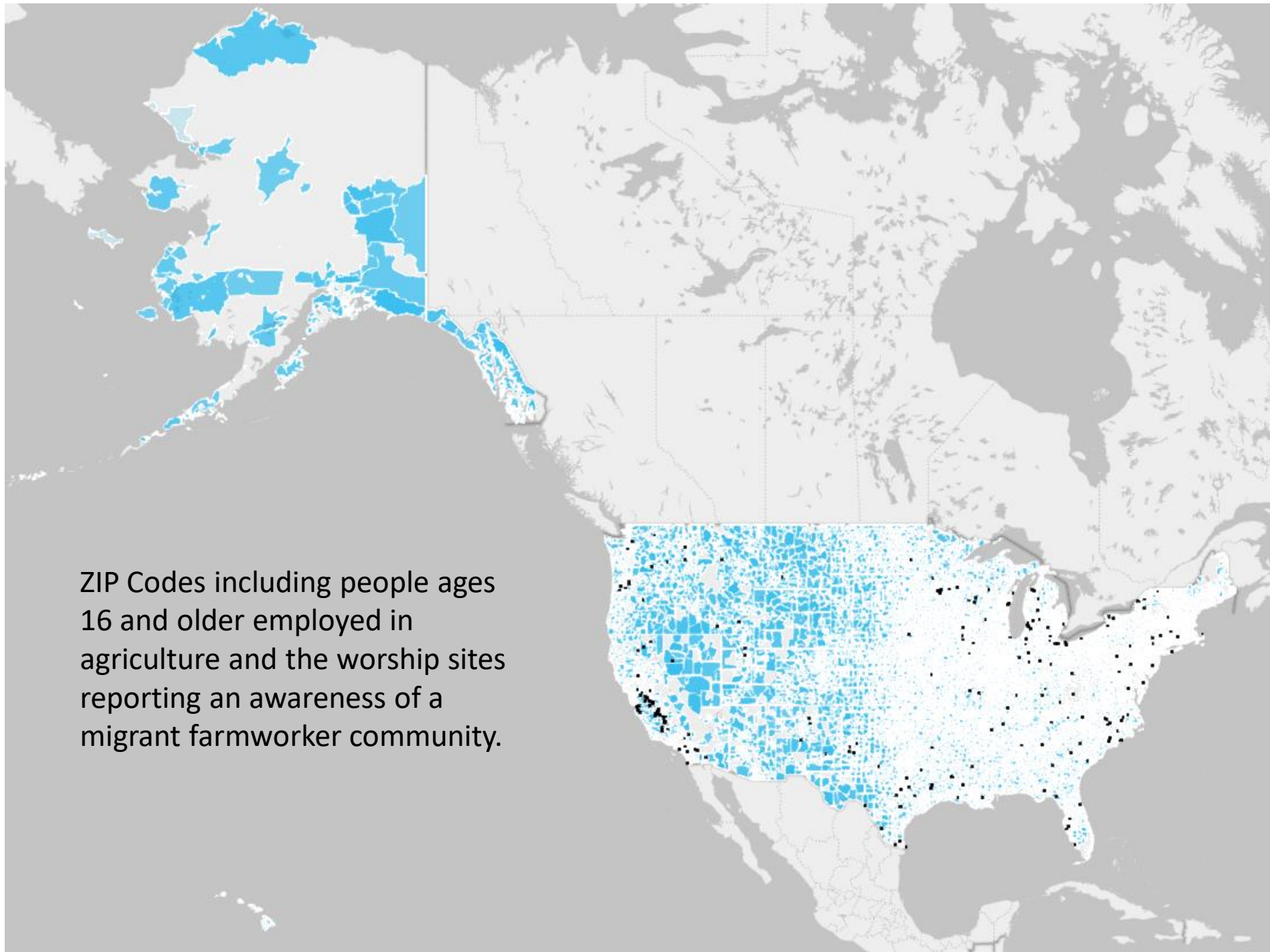
Arch/dioceses: Los Angeles, Honolulu, San Diego, Oakland, Las Vegas, San Francisco, Sacramento, and San Bernardino have the largest foreign-born Filipino populations



**Numbers of worship sites noting presence of migrant, refugee,
and itinerant people within parish territory by group**

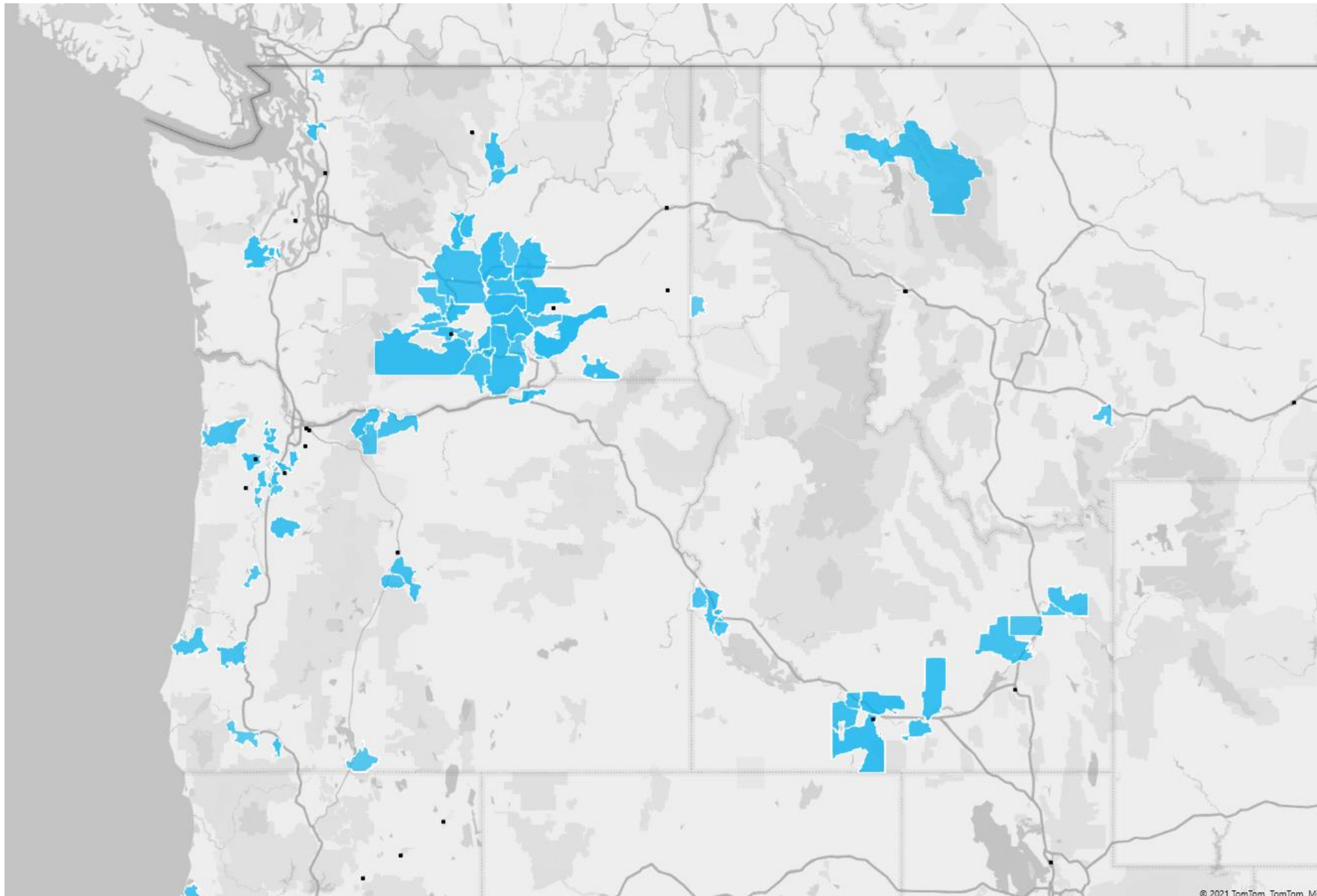
Community	Number of Sites	Size of Population in U.S.
Undocumented communities	272	10,500,000
Tourists, pilgrims (annually)	256	79,260,000
Migrant farmworkers (annually)	219	850,780
Family members of immigrants in ICE Immigrant Detention Centers	105	--
Refugees and asylum seekers (entering in 2019)	96	76,424
Long-haul truck drivers	85	3,500,000
Circuses, carnivals, race tracks, rodeos, other travelling shows	52	--
Unaccompanied minor immigrants (entering in fiscal year 2019)	46	69,550
Seafarers, maritime workers	31	145,730
Victims of human trafficking (in 2019)	29	74,370
Airport communities (pilots, crews)	29	307,874
Irish Travelers, Gypsies	18	--
Other	43	--

ZIP Codes including people ages 16 and older employed in agriculture and the worship sites reporting an awareness of a migrant farmworker community.

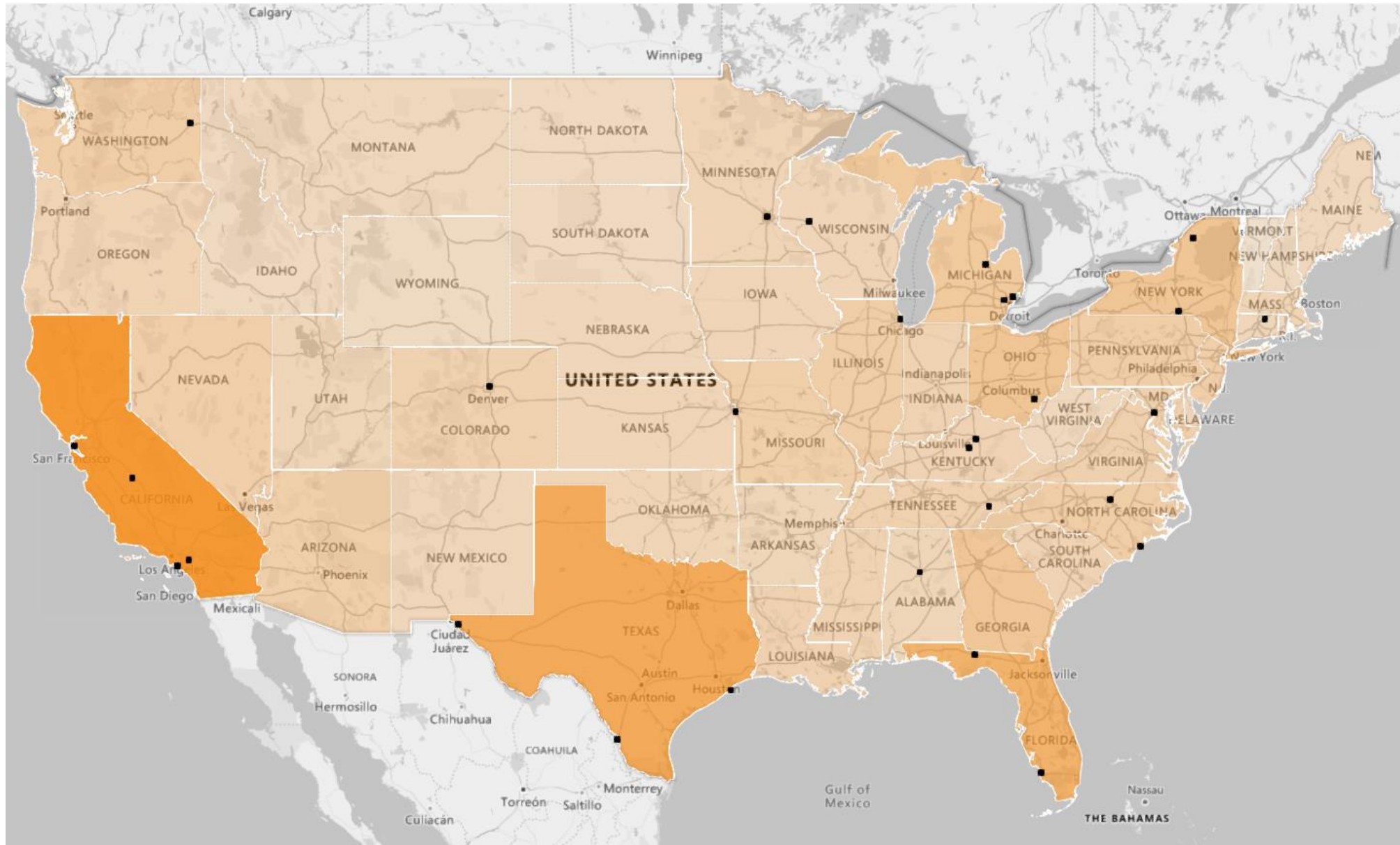


Pacific Northwest:
Zip Codes with 500
or more residents
working in
agriculture and
the worship sites
aware of migrant
farmworker
communities

Arch/dioceses:
Fresno, Los
Angeles, Monterey,
Portland (OR),
Yakima,
Sacramento, and
Boise have the
largest foreign-born
agricultural worker
populations



Sites Reporting Victims of Human Trafficking Present in Community and Human Trafficking Cases Reported, 2019 by State



Sites Reporting Irish Traveller or Romani, Roma, or Gypsy Communities



“Approximately 1 million Romani people who live in the United States” -- FXB Center for Health and Human Rights, Nov. 2020



“There are believed to be anywhere from 7,000 to 40,000 Irish Travellers in the US, though most estimates lie closer to the 10,000 mark.” -- Casey Egan, *IrishCentral*, Jul 10, 2020

Diocesan Inventory (DWSI)

- Fifty-six arch/dioceses and arch/eparchies responded to a parallel questionnaire to the CWSI
- These do not provide for geo-location on maps relative to population, however they provide indicators of awareness of communities at the level of the diocese
- The DWSI is used along with the CWSI to provide a detailed profile report for all territorial arch/dioceses in the United States
- These profiles and the national report are available at cara.georgetown.edu

Conclusions

- This study is an important baseline for understanding the presence of migrant, refugee, and itinerant communities in the United States.
- It highlights that many Catholic worship sites are unaware of many of these communities. This may be due to the traditional focus of parishes on longer-term residents who are registered with the parish.
- The study will lead to increased awareness of the presence of certain populations leading to more coordination between sending and receiving communities, as well as among dioceses/parishes in the United States that see their populations grow and contract seasonally with the influx of migrant populations.

